



Building Enclosure Commissioning

Collaborative Expertise.

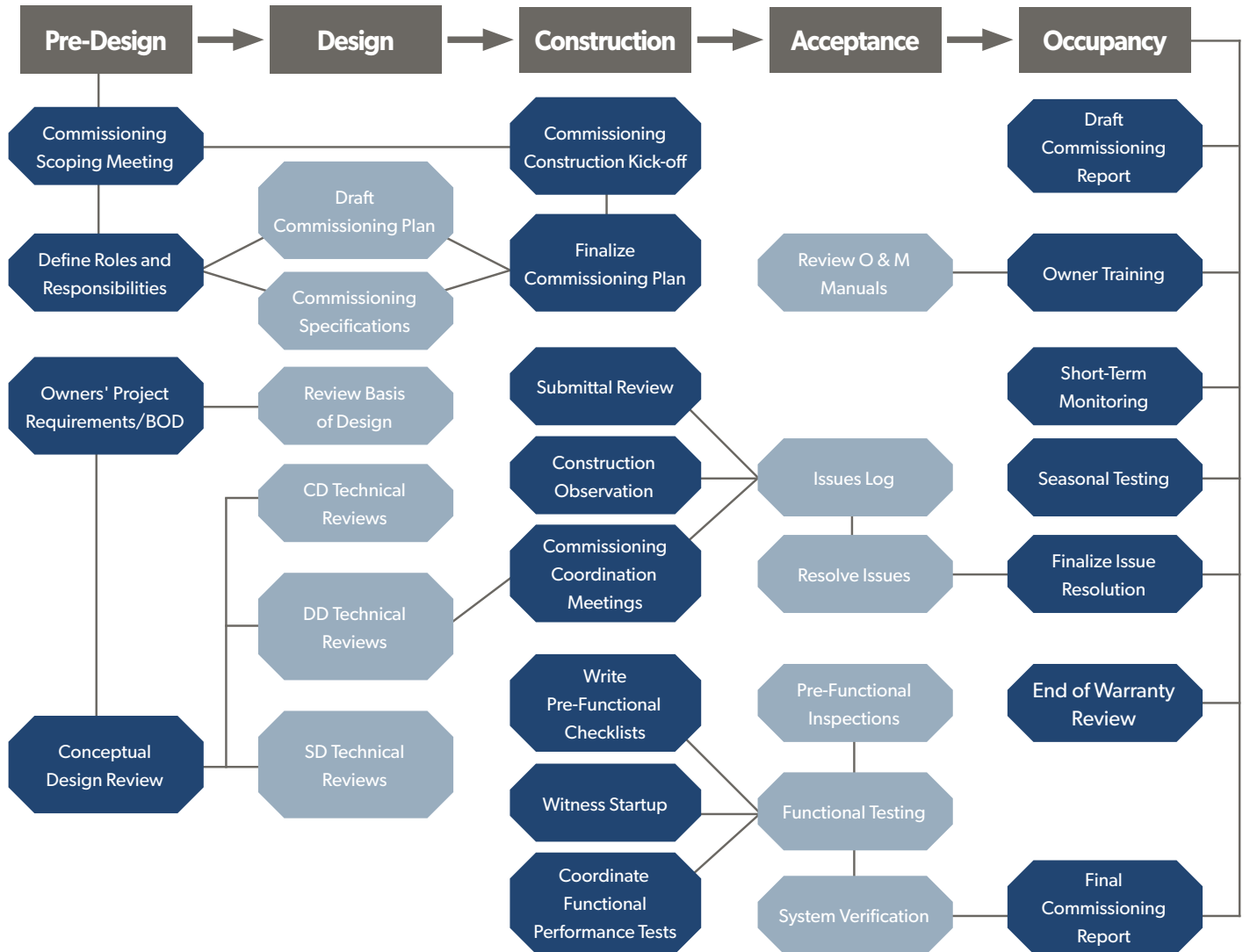
Proven Performance. Lasting Confidence.

SK&A[®]



Building Enclosure Commissioning

SK&A offers specialized building enclosure commissioning services in addition to a comprehensive suite of building enclosure consulting and testing services. Our certified Building Enclosure Commissioning Providers (BECxP) have a vast knowledge in the fundamentals of building science, building enclosure design, engineering, installation, and the testing required to deliver high-performance building enclosures. This expertise is coupled with decades of experience conducting forensic investigations and addressing building enclosure failures. Our clients leverage our experience to properly implement the commissioning process - reducing risk, verifying functional performance, and reducing life costs.



Building Enclosure Commissioning Services

Building enclosures are becoming increasingly complex and materials comprising the building enclosure are ever evolving and more challenging to detail. Owners, developers, and design professionals are demanding higher levels of performance for their building enclosures in addition to reducing energy demand and achieving sustainability goals. At the end of the day, owners just want a building that doesn't leak and provides superior indoor air quality and thermal comfort. The building enclosure commissioning process goes beyond building enclosure consulting by utilizing a specific quality-focused process for the design and delivery of today's building enclosure systems.

Certified Building Enclosure Commissioning Providers (BECxP)

Our certified building enclosure commissioning process providers (BECxP) and building enclosure consultants have extensive experience and depth-of-knowledge in building enclosure design and commissioning, materials, systems, and field performance testing. Our success in client retention is the result of a practical collaborative approach to commissioning and the accomplishment of our clients' objectives.



Cindy Garman, PE, BECxP, CxA+BE

Principal

P 301.881.1441, C 240.694.6660
cindyg@skaengineers.com



Justin P. Long, PE, RBEC, BECxP

Principal

P 301.881.1441, C 240.401.5933
justinl@skaengineers.com



Rony J. Paredes, BECxP, CxA+BE

Sr. Associate

P 301.881.1441, C 571.413.4744
ronyp@skaengineers.com

SK&A[®]
Structural Engineers

Potomac, MD
301.881.1441

Washington, DC
202.659.2520

Atlanta, GA
470.750.7819

skaengineers.com

